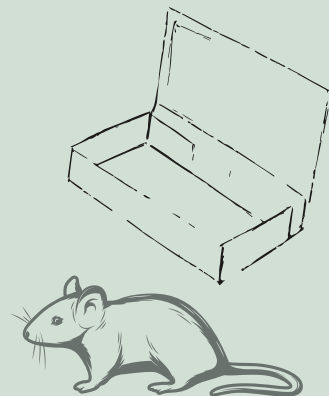
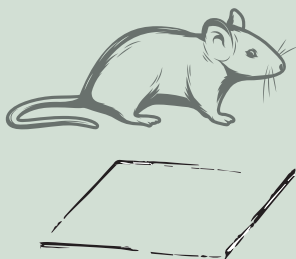




BEST PRACTICE DECALOGUE FOR A SUSTAINABLE HANDLING OF THE RODENT'S GLUES.

The use of glue traps raises some issues linked to animal welfare and the trapping of non-target species. Glue Traps, however, remain an efficient system for the control and containment of the rodent pests when applied with the correct technical measures.

A strict work protocol must be the basis for the sustainable use of these still very useful and poison-free devices. Careful handling, with the associated paperwork, allows for a functional collection of useful information for monitoring and improves the efficiency of operations, including cost-effectiveness. The responsibility for the use of these devices lies with the operators, who must be properly trained and made aware of their responsibilities. GEA promotes the Decalogue of *Best Practice* at conferences, seminars and trade fairs. This set of actions and documentation will be the forthcoming quality standard for the responsible use of these devices.



In order to promote the responsible use by specialised operators, ensuring on one hand a high quality level of the operation, and on the other the contention of the problem, thanks to the attention shown by GEA and associations of the sector, we have put together a Decalogue of *Best Practice* actions, that is available for the PCOs.

In this protocol we define the Rodent Glue Traps as "any surface covered by glue specifically used to trap rodents" and we consider the following points:

- 1 Assess the risk level: Before beginning to evaluate the possibility of other control methods, by suitability and results achieved in similar cases.
- 2 Only trained and competent professionals should be involved: responsible and certified PCOs
- 3 Frequent Monitoring: after no longer than 12 hours after installing the trap to minimize target's suffering and to release any non-Target. Yet to be trained operators can do the monitoring but under direct responsibility of the Pest Manager. Glue traps should only be used indoor and never outdoor.
- 4 Need for a contingency plan: indicate a second person capable of carrying out all the work; if there are problems with the inspection schedule, the action must be suspended and the traps uninstalled, albeit temporarily.
- 5 Install traps of a size suitable for the target species and protected by appropriate covers.
- 6 Properly record all position, timing, catch, discharge data and keep them available and copied.
- 7 Suppress the target as quickly as possible (no drowning).
- 8 Protect non-target animals with devices properly positioned and covered with protective tunnels, as well as having suitable diluents and emollients available to properly release any trapped specimens, always in cooperation with specialists for the rescuing of non-target animals.
- 9 All devices must be removed at the end of treatments and recorded on the worksheet.
- 10 Proper disposal according to current regulations, keeping track of it in the project records.